

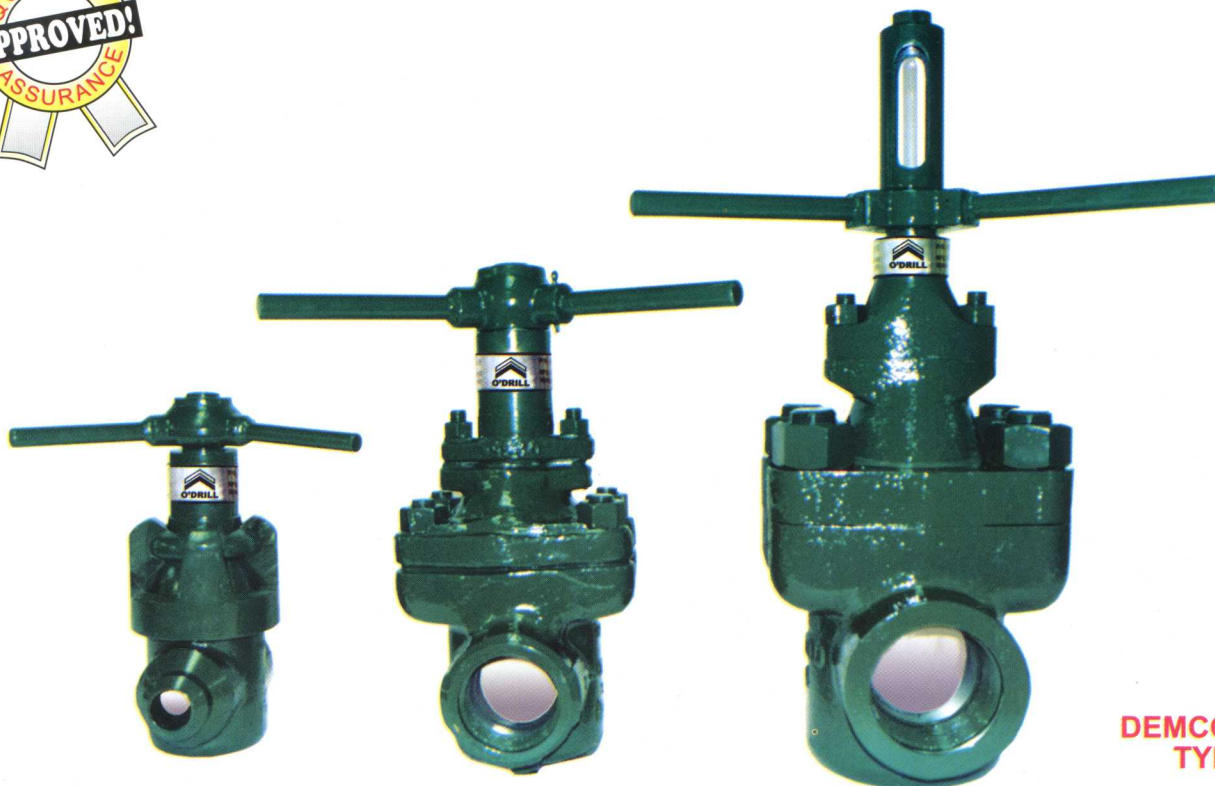
Established  
1982



*A Pump & Valve Mfg. Company*

*Engineered for High Performance...*

**Catalog**  
DGV 2", 3" & 4"



2"

3"

4"

DEMCO® DM  
TYPE

*Top Quality... Lowest Prices..... Guaranteed !!!*



**GATE VALVES**

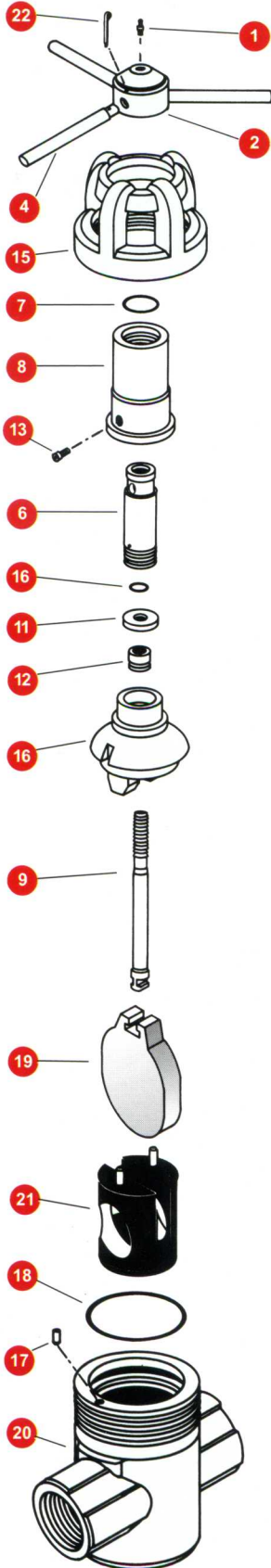


100% Interchangeable with DEMCO® DM TYPE

✓ *out our quality...  
Compare our Prices!!!*

# O'DRILL (Demco® DMC Type)

100% Interchangeable  
VALVES & PARTS



2"

2" - 2000, 3000 & 5000 W.P.			2000 WP	3000 WP	5000 WP
REF.	Description	SIZE	WT.	2"	2"
1	<b>LUBE FITTING</b> Steel		.1#	5195	
2	<b>HUB ASSEMBLY</b> Steel		5#	14687	
4	<b>LOCK HANDLE</b> Steel		1#	1891	
6	<b>STEM SCREW</b> Steel		3#	1913	
7	<b>STEM SCREW SEAL</b> Buna N		.1#	5530 - 224	
8	<b>SCREW HOUSING</b> Steel		4#	1848	
9	<b>STEM</b> 303 SS 316 SS		1#	1931 - 002 1931 - 008	
10	<b>SECONDARY SEAL</b> Buna N		.1#	5530 - 210	
11	<b>RETAINER</b> Steel		1#	1940	
12	<b>STEM SEAL ASSEMBLY</b> (Includes Bronze Bushing) Buna N Viton		.1#	1949 - 001 1949 - 006	
13	<b>LOCK SCREW</b> Steel		.1#	5665 - 22004	
15	<b>COUPLING</b> WCB Steel		16#	1446 - 020	1445 - 030
16	<b>BONNET</b> ANSI 1029 Steel Uncoated Coated		7#	1237 - 020 1237 - 021	
17	<b>INDEX PIN</b> Steel		.1#	1981	
18	<b>BONNET SEAL</b> Buna N Viton		.1#	5530 - 342 5531 - 342	
19	<b>GATE</b> Steel, Nickel Plated 316 SS		3#	1887 - 002 1887 - 008	
20	<b>BODY, UNCOATED</b> Steel <b>SCREWED-API - LP FULL PORT WELD</b>		29#	1285- 020	1271 - 030
		-SCH. 80	29#	1307 - 120	1309 - 130
		-SCH. XXH		1307 - 220	1309 - 230
		-SCH. 160		1307 - 520	1309 - 530
	<b>FLANGED - RTJ</b>		73#	2039 - 120	1510 - 230
21	<b>SEAT</b>		1.5#	1876 - 011	1876 - 011
	Ductile Iron	- Buna N		1876 - 012	1876 - 012
		- Viton		1876 - 021	1876 - 021
	STEEL	- Buna N	1.5#	1876 - 022	1876 - 022
		- Viton		1876 - 021	1876 - 021
	316 SS	- Buna N	1.5#	1876 - 081	1876 - 081
		- Viton		1876 - 082	1876 - 082
22	<b>PIN, LOCK HANDLE</b> Steel		1#	5420 - 18728	
★	<b>REPAIR KIT 2" - 6 PCS.</b> 1Ea - Ref. 7,10, 12, 18, 19, 21		6 #	P/N: DGV-25 KRK	

DISCLAIMER: DEMCO IS A REGISTERED TRADE MARK OF ANOTHER COMPANY. O'DRILL / MCM, INC. IS NO WAY AFFILIATED WITH THIS COMPANY. THE PART NUMBERS LISTED ABOVE ARE FOR IDENTIFICATION PURPOSE ONLY.

To order: Specify a) Size b) Pressure c) End connections

*We Sell for Less..... !!!*

